

The Inner South-East Regional Framework

HOW WE GOT HERE

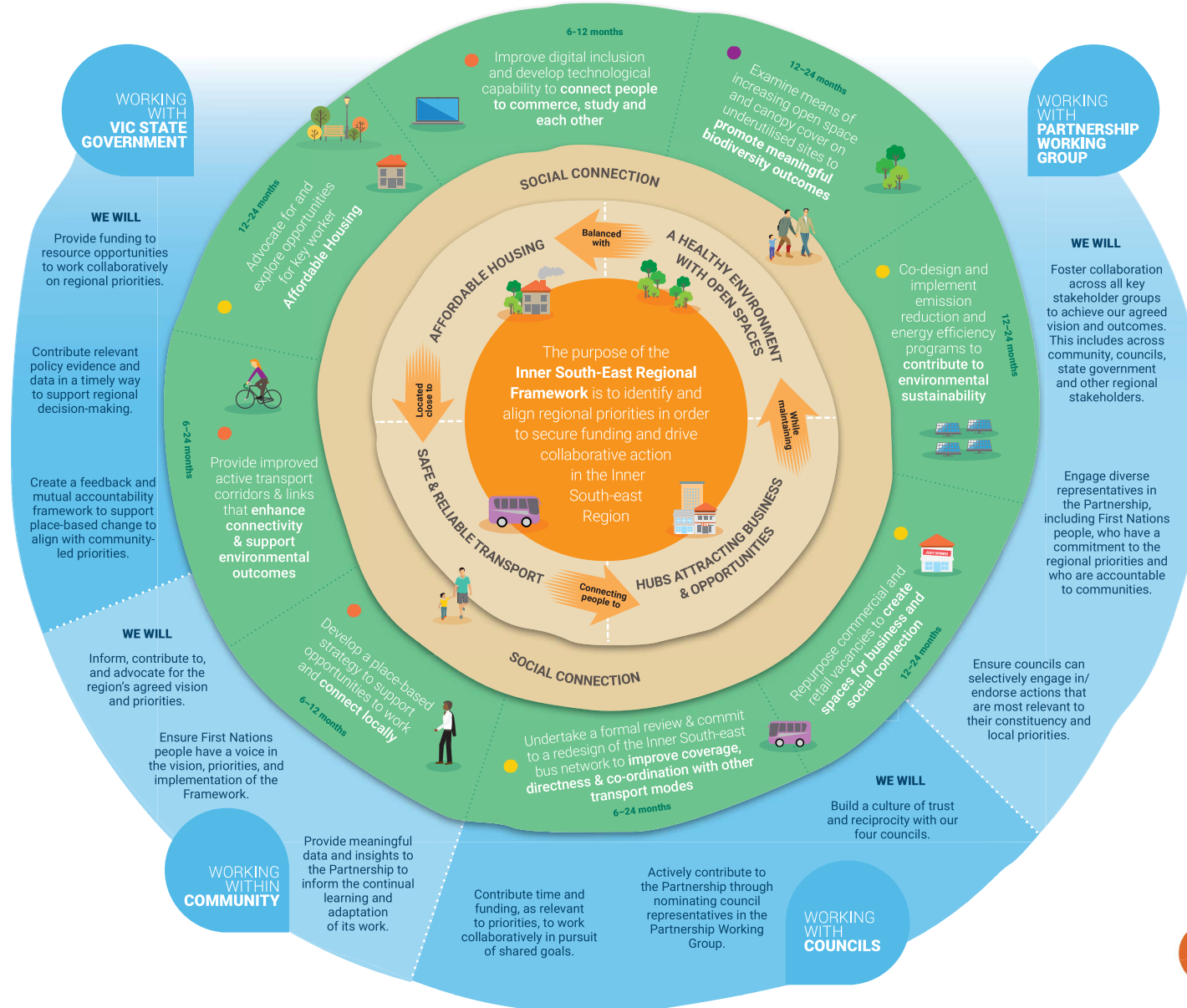
- July 2017**
The Inner South-east Partnership is established
- August 2017 – August 2018**
Assemblies and Forums held
- September 2018**
Priorities reported back to the Victorian Government
- 2019 - July 2020**
Five key reports published and Making Connections event
- September 2019**
Policy advice provided to Victorian government
- October 2020**
Regional Framework completed

Further contextualisation of this timeline is provided within the Supplementary Report.

KEY

- OUR VISION**
- FOCUS AREAS**
- PRIORITY ACTIONS**
- WAYS OF WORKING**
- Test, Try & Learn
- Influence & Advocate
- Discover & Build Alignment

A Thriving & Connected Inner South-East Region that meets the diverse needs of its community



DELIVERABLES

- Social Isolation and Loneliness Report
- Inner South-east Affordable Housing Study
- Strategy for a Vibrant Local economy in the Inner South-east Region
- Integrated Transport Framework
- Inner South-east Partnership 2019 summary of advice Economy and Jobs
- Inner South-East 2020 Affordable Housing Study Final Report
- Inner South-East Metropolitan Partnership Sustainability Advocacy Strategy